



ORDINARILY AVAILABLE

STAGES

01

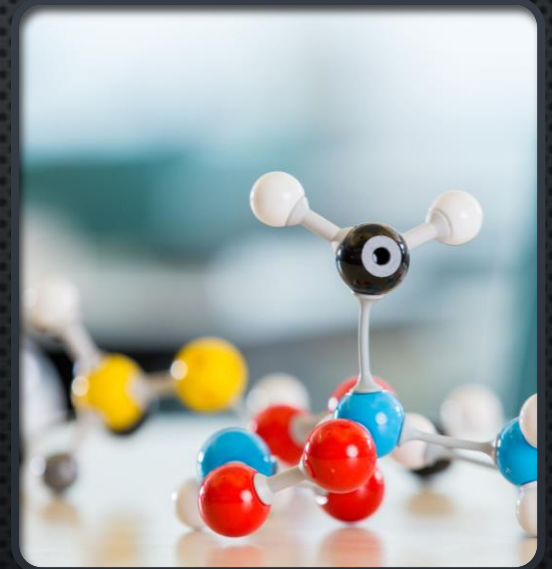
Development
of New
Ordinarily
Available

02

Provision and
understanding
need, risks and
future
pressures

03

Roll Out and
what next?



Element 2 (Secondary underfunded)	Evidence work needed	Cannot access OT without an EHCP	LA not supporting with K coded children	LA pushing "high tariff" children in mainstream
Recruitment of Support Staff 49	Specialist Provision under a special school above a mainstream school	EP Capacity and recruitment	SEND Support Service	Structure
Communication	Family's and School not understanding role of SEND Admin Service	LA need to provide specific services for Vulnerable Learners	Provision	DFE expectations Plan Support

FEEDBACK AND INFORMATION

Collation of work around children with a K code, cost, need and resources	Information and 2/3-hour meeting with the IIP	SENDCO training for PFA / chunking Graduated Response via the IIP	System Support and work with Primary Feeders and Secondary	Restructure aligned to need
Proposed SEND Support Service	Increased provision going through approval	Education Partnership established	Communication on SEND tripled with schools	Multiple Panel Reps
		Complex Case Panel		

50

WORK DONE

**Proposals to discuss –
S< with academies**

EP Lobbying

**Specialist Support staff to
be recruited**

Funding Discussion SFA

School Provision

**With the education
partnership. “what
schools and the LA can
co fund for all to access.”**

WORK ONGOING



**THANK
YOU**